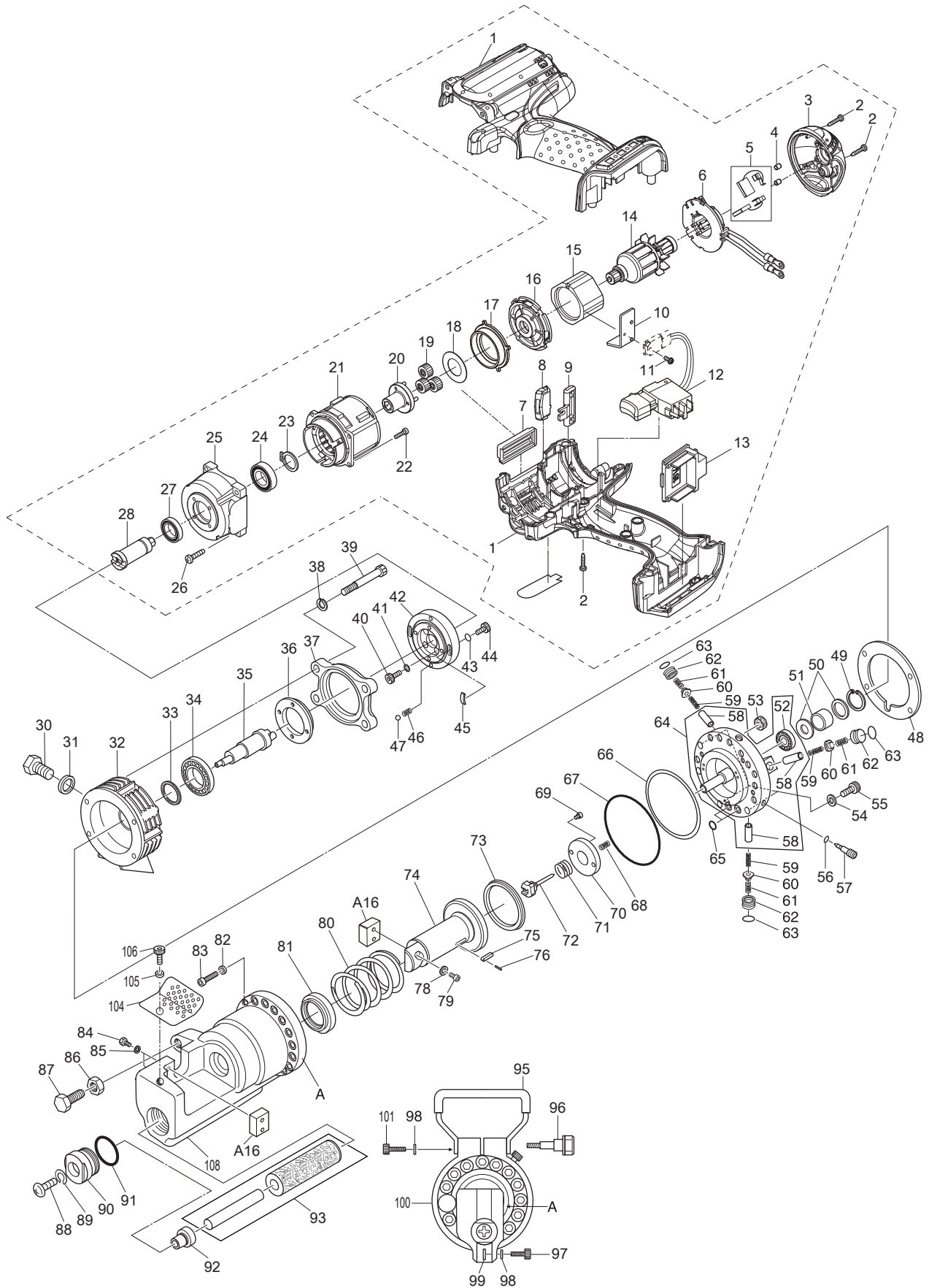




11 - 2015
DSC191Z
18V Steel Rod Cutter



Item No.	Type	Sub	Part No.	Description	Qty	Unit
001	1		187142-8	HOUSING SET	1	SET
	2		183G51-1	HOUSING SET	1	SET
002			266130-9	TAPPING SCREW BIND PT 3X16	10	PC.
003			419642-3	REAR COVER	1	PC.
004			263032-0	RUBBER PIN 4	2	PC.
005			195021-6	CARBON BRUSH CB-440 2PC/SET W/ORIGIN	1	SET
006			638849-4	BRUSH HOLDER COMPLETE	1	PC.
007			451163-9	COVER	1	PC.
008			687216-0	LENS CASE	1	PC.
009			451162-1	LOCK LEVER	1	PC.
010			689145-3	HEATSINK	1	PC.
011	2		652066-2	PAN HEAD SCREW M3X9 W/WASHER	1	PC.
012			650653-1	SWITCH TG553FSB-4B	1	PC.
013			644808-8	TERMINAL	1	PC.
014			619165-3	ARMATURE	1	PC.
015	2		632J71-5	YOKE UNIT	1	PC.
016			450386-6	MOTOR BRACKET	1	PC.
017			227129-9	INTERNAL GEAR 46	1	PC.
018			267789-5	FLAT WASHER 18	1	PC.
019			154468-3	SPUR GEAR 16 COMPLETE	3	PC.
020			141744-4	CARRIER COMPLETE	1	PC.
021			419252-6	GEAR CASE	1	PC.
022			911017-7	PAN HEAD SCREW M3X12	4	PC.
023			961055-9	RETAINING RING S-15	1	PC.
024			211234-2	BALLBEARING 6902LLB	1	PC.
025			318455-8	GEAR CASE B	1	PC.
026			266045-0	TAPPING SCREW 4X20	4	PC.
027			211233-4	BALL BEARING 6802LLB	1	PC.
028			326213-8	SPINDLE	1	PC.
030			SC00000061	HEX. BOLT 10X15	1	PC.
031			SC00000489	SEAL WASHER WF10171.6	1	PC.
032			SC03213510	PUMP CASE	1	PC.
033			SC00000054	OIL SEAL	1	PC.
034			SC00000050	BALL BEARING 6002RU	1	PC.
035			SC03501390	ECCENTRIC SHAFT	1	PC.
036			SC03251400	THRUST FIXING FLANGE	1	PC.
037			SC03221700	MOTOR FLANGE	1	PC.
038			SC00000066	WASHER 6	4	PC.
039			922382-9	HEX. SOCKET HEAD BOLT M6X60	4	PC.
040			SC07511020	BOLT HB4X15	4	PC.
041			SC00000068	WASHER 4	4	PC.
042			SC03222300	MOTOR MOUNTING FLANGE	1	PC.
043			SC00000068	WASHER 4	4	PC.
044			SC07511020	BOLT HB4X15	4	PC.
045			SC04007620	LEAF SPRING	2	PC.
046			SC04007430	POSITION SPRING	2	PC.
047			SC07900010	STEEL BALL S4	2	PC.
048			SC04601470	LINER B	1	PC.
049			SC07411020	RETAINING RING RTW-26	1	PC.
050			SC00000019	NEEDLE BEARING SUPPORTER	2	PC.
051			SC00000048	NEEDLE BEARING	1	PC.
052			SC00000049	BALL BEARING 608	1	PC.
053			SC00000020	MAGNET	3	PC.
054			941201-0	FLAT WASHER 8	3	PC.
055			SC00000376	HEX. SOCKET HEAD BOLT 8X20	3	PC.
056			SC06505300	O RING S4	1	PC.
057			SC03501420	RETURN BULB	1	PC.
058			SC00000015	PISTON	3	PC.
059			SC00000022	PISTON RETURN SPRING	3	PC.
060			SC00000464	CHECK VALVE #T43445N1	3	PC.
061			SC00000021	CHECK VALVE SPRING	3	PC.

Item No.	Type	Sub	Part No.	Description	Qty	Unit
062			SC03500540	METAL PACKING	3	PC.
063			SC06505590	O RING S-8	3	PC.
064			SC03206140	CYLINDER	1	PC.
		INC.		Item No. 52,58	0	
065			SC06505010	O RING P6	2	PC.
066			SC06503260	BACK UP RING G70	1	PC.
067			SC06505350	O RING FOR CYLINDER G70	1	PC.
068			SC00000023	RELEASE VALVE SPRING	1	PC.
069			SC00000060	HEX. SOCKET HEAD BOLT 4X6	2	PC.
070			SC00000481	STOPPER PLATE #45423	1	PC.
071			SC00000032	VALVE RETURN SPRING	1	PC.
072			SC03500310	RELEASE VALVE	1	PC.
073			SC00000096	ROD PACKING	1	PC.
074			SC03112300	CUTTER ROD	1	PC.
075			SC03700020	KEY	1	PC.
076			SC00000070	SPRING PIN 2.5X10	1	PC.
078			SC00000067	WASHER 5	2	PC.
079			SC00000098	HEX. SOCKET HEAD BOLT 5X15	2	PC.
080			SC04000050	RETURN SPRING FOR CUTTER ROD	1	PC.
081			SC06503510	DUST SEAL	1	PC.
082			SC07620040	WASHER HW8	11	PC.
083			922441-9	HEX. SOCKET HEAD BOLT M8X25	11	PC.
084			SC00000057	HEX. SOCKET HEAD BOLT 6X18	2	PC.
085			SC00000066	WASHER 6	2	PC.
086			931601-2	HEX. NUT M12	1	PC.
087			SC00000134	HOLD BOLT	1	PC.
088			SC00000034	WOOD SCREW 5X60	1	PC.
089			SC00000065	SPRING WASHER 8	1	PC.
090			SC03507010	BUSHING HOLDER	1	PC.
091			SC06505320	O RING P26	1	PC.
092			SC03507000	BUSHING	1	PC.
093			SC09004910	OIL LEVELER SACK	1	PC.
095			SC03302640	HANDGRIP	1	PC.
096			SC09030630	SCREW SET	1	PC.
097			SC07513030	BOLT HB6X18	1	PC.
098			SC07610040	WASHER SW6	2	PC.
099			SC03302650	SPACER	1	PC.
100			SC03223430	HANDGRIP RING	1	PC.
101			SC07513090	HEX. SOCKET HEAD BOLT M6X22	1	PC.
104			SC03505790	PROTECTOR	1	PC.
105			SC07610030	WASHER SW5	1	PC.
106			SC07512010	BOLT HB5X5	1	PC.
108			SC03103210	BAR HOLDER	1	PC.
C01			SC08107840	CARTON F/DSC191Z	1	PC.
C02			SC08013360	CARTON NAME PLATE F/DSC191Z	1	PC.

ACCESSORIES

- Visit www.makita.ca for more accessories information -

A01			-----	18V LI-ION BATTERY		
A02			-----	BATTERY CHARGER		
A03			783201-2	HEX. WRENCH 3	1	PC.
A04			783202-0	HEX. WRENCH 4	1	PC.
A05			783203-8	HEX. WRENCH 5	1	PC.
A06			783204-6	HEX. WRENCH 6	1	PC.
A07			781212-1	WRENCH 17-19	1	PC.
A08			SC00000142	OIL 150CC	1	PC.
A14			SC09004030	PRESS FITTING JIG	1	PC.
A15			-----	LI-ION BATTERY ACCESSORIES		
A16			SC09002030	SPACIAL BLADE A & B SET	1	PC.
		INC.		Item No. 78, 79, 84, 85 (2 each)		